

**From:** [NI Enquiries](#)  
**To:** [Luton Airport](#)  
**Subject:** FW: London Luton Airport Expansion Project  
**Date:** 30 October 2023 08:02:36  
**Attachments:** [Luton Airport Road layout 2023 PDF.pdf](#)

---

**From:** ronald taylor [REDACTED]  
**Sent:** 29 October 2023 12:02  
**To:** NI Enquiries <NIEnquiries@planninginspectorate.gov.uk>  
**Subject:** London Luton Airport Expansion Project

The recent car park fire and partial building collapse( Oct 11) and subsequent surface traffic chaos demonstrates the traveller inconvenience and stress endured, plus the overall inadequate plans for further expansion of London Luton Airport.

The single road access from the A1081 to and from Terminal 1 with no alternative option to reroute traffic highlights the problem at current passenger levels, never mind the proposed increase to 19mppa.

Similarly the DART link has been closed due to its location within the car park complex, making the Thameslink rail connection depended on bussing which has to use the same single road access to and from Terminal 1.

The most obvious way to visualise these problems is to visit the site now OR view the the attached 3 pages of maps and photographs. The road maps taken from the Airport documentation show clearly the lack of space in what is a small footprint of land for such a major expansion.

Regards  
Ron Taylor

*Please note that the contents of this email and any attachments are privileged and/or confidential and intended solely for the use of the intended recipient. If you are not the intended recipient of this email and its attachments, you must take no action based upon them, nor must you copy or show them to anyone. Please contact the sender if you believe you have received this email in error and then delete this email from your system.*

*Recipients should note that e-mail traffic on Planning Inspectorate systems is subject to monitoring, recording and auditing to secure the effective operation of the system and for other lawful purposes. The Planning Inspectorate has taken steps to keep this e-mail and any attachments free from viruses. It accepts no liability for any loss or damage caused as a result of any virus being passed on. It is the responsibility of the recipient to perform all necessary checks.*

*The statements expressed in this e-mail are personal and do not necessarily reflect the opinions or policies of the Inspectorate.*

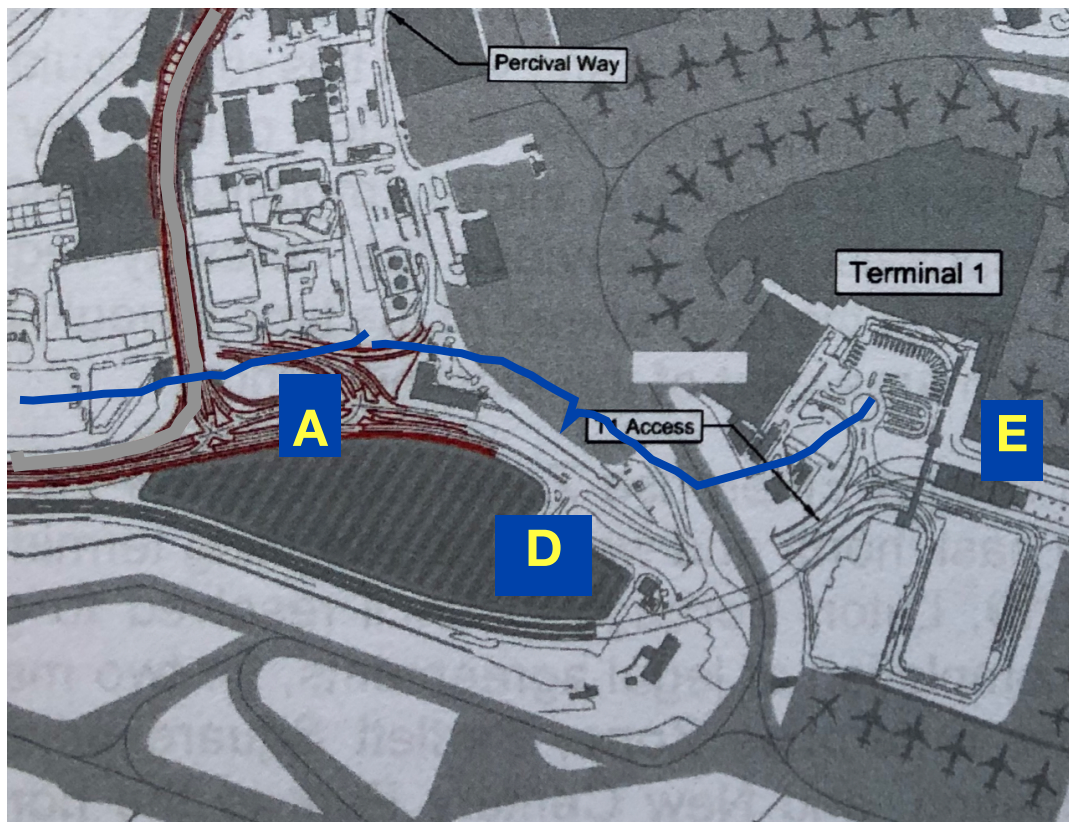
DPC:76616c646f72





# Oct 2023. Luton Airport Traffic Chaos following car park fire and partial collapse.

## Further expansion totally impractical!



The image\* above shows how tightly packed all sections of the airport are, leaving no room for any contingency or emergency!

AND no adjacent roads /land available to divert traffic to and from Terminal 1. PLUS DART also closed.

The temporary drop off/collection point in the mid term car park provided a not very satisfactory solution, likely to last for a year at least

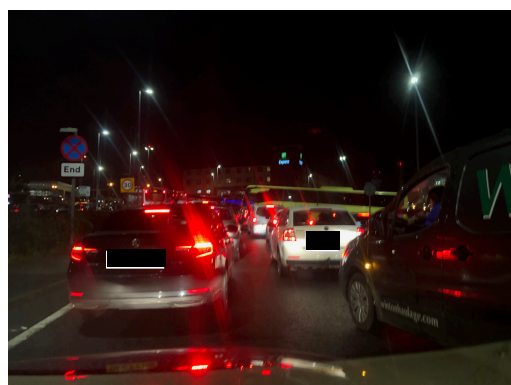
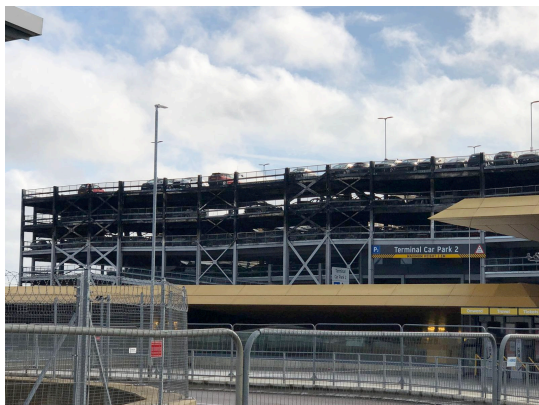
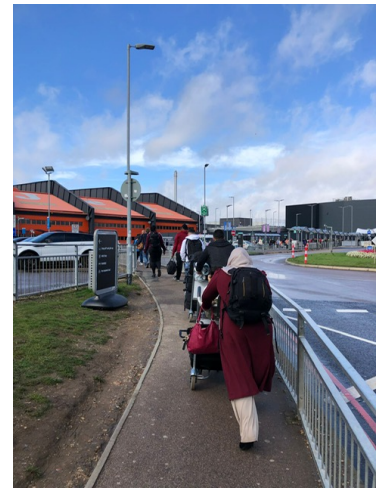
**The bulk of surface traffic will still be accessing Terminal 1 at A from the A1081 with long queues of traffic emitting masses of exhaust fumes.**

**The temporary drop off / collection point in the midterm car park at D will still continue with buses taking passengers to Terminal 1.**

**The Dart link also closed at E. Passengers being bused to and from Thames Link Luton Parkway Station.**

\*Taken from Luton Rising 'Getting to and from the airport-our emerging transport strategy

**Oct 2023. Luton Airport Traffic Chaos following car park fire and partial collapse.  
Permanet traffic congestion day and night.  
Passengers walking to Terminal 1.  
Further expansion totally impractical!**

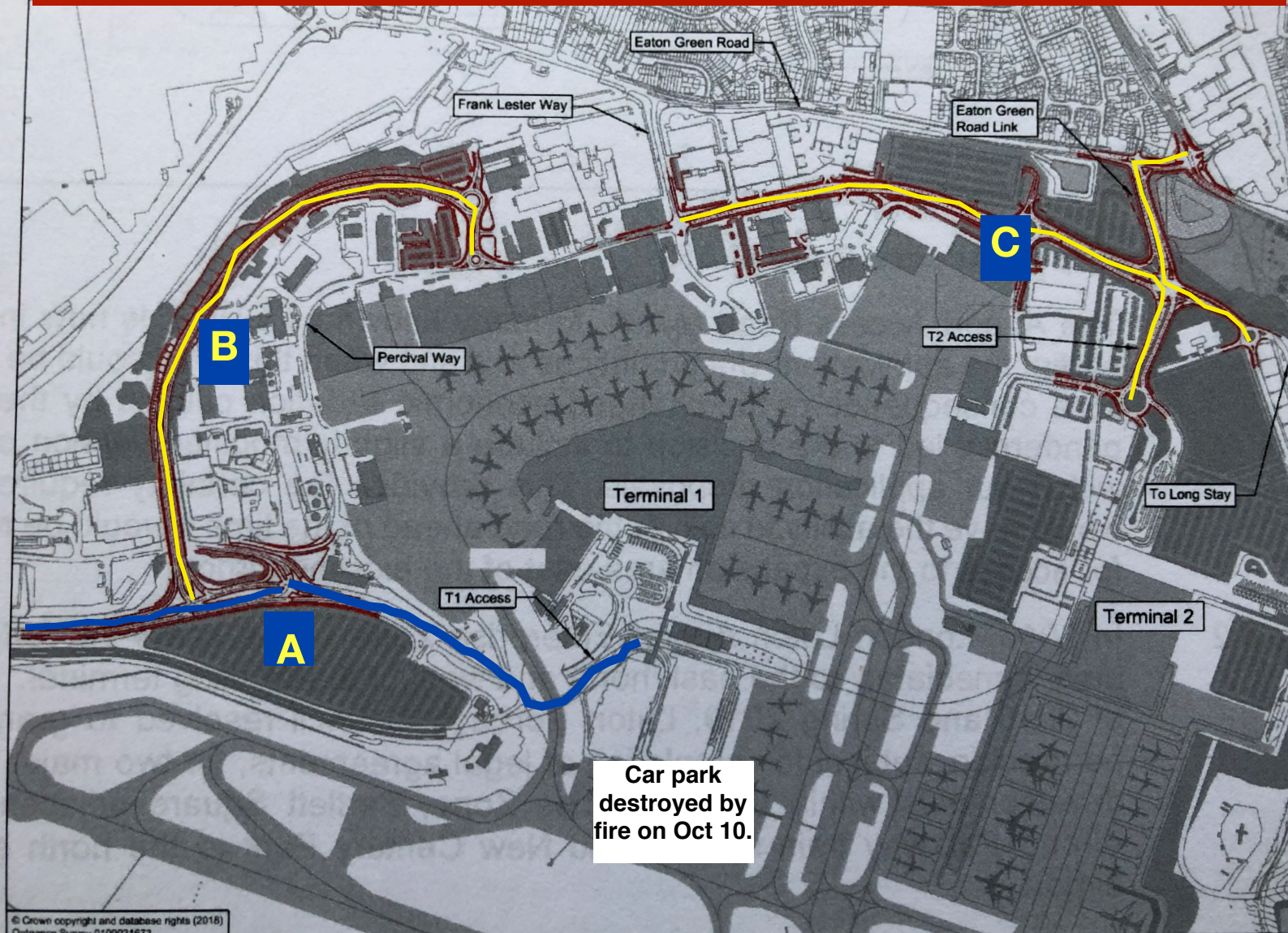




# Luton Airport Phase 2 layout proposal

27 million passengers.

The image\* below shows why the proposal to increase passenger numbers beyond the 19 million pa is totally impractical.



The image above shows every square metre of space is occupied leaving no room for any contingency or emergency!

AND no adjacent land available. **An incredibly small footprint for such a large proposal.**

**The bulk of surface traffic would still be accessing Terminal 1 at A.**

**The new road developments at B & C are for Terminal 2 when that is planned to start construction in 2033.**

**OCT 2023.** The car park fire and subsequent partial collapse adjacent to Terminal 1 demonstrates the failings of the current surface traffic arrangements.

\*Taken from Luton Rising 'Getting to and from the airport-our emerging transport strategy